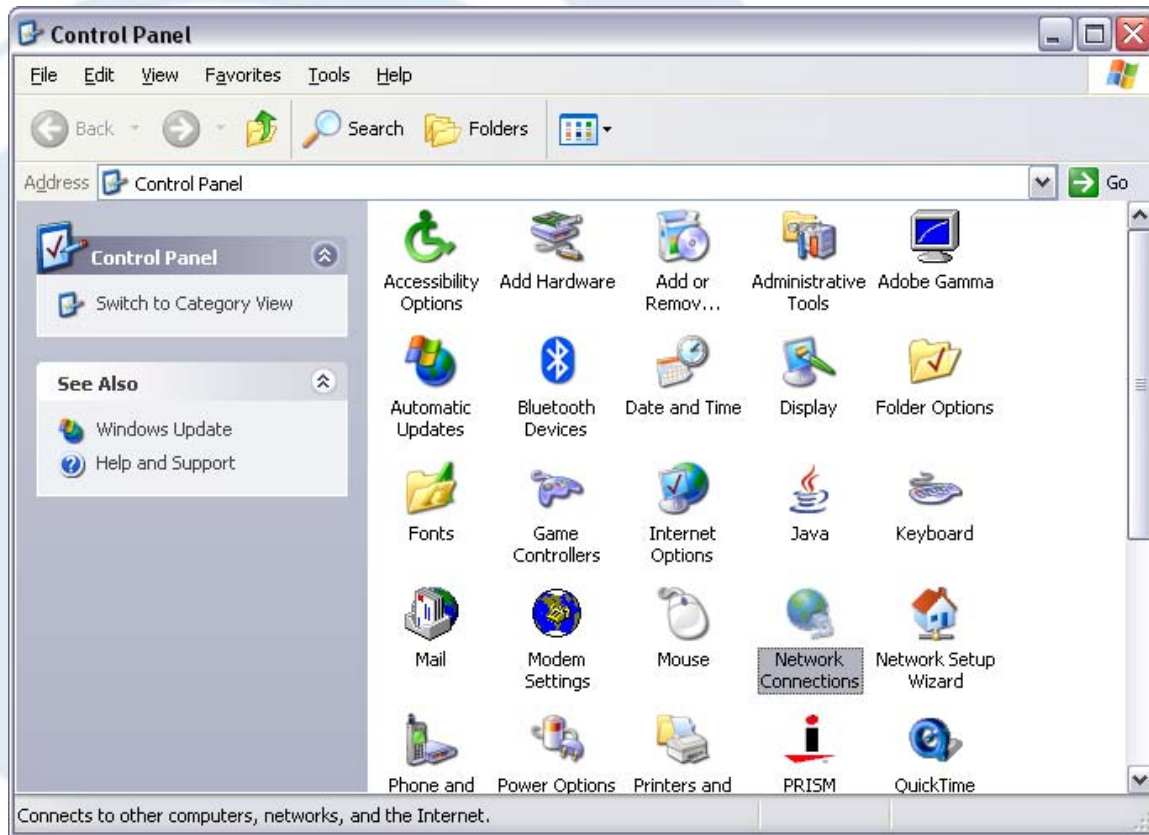




POWERED BY:



Using MIGs with a Dial-up Internet Connection (Windows XP)



Click **“Start”** then select **“Control panel”**

Click **“Network Connections”**



Inside Network Connections, click the **Dial-up icon** that you want to use. It should fall under the heading Dial-up (in this figure, ISP Dialup). Click once (Note: do not yet dial).



Click ***“Properties”***



Select “*Advanced Tab*”



Click *“Allow other network users to connect through this computer’s Internet connection”*

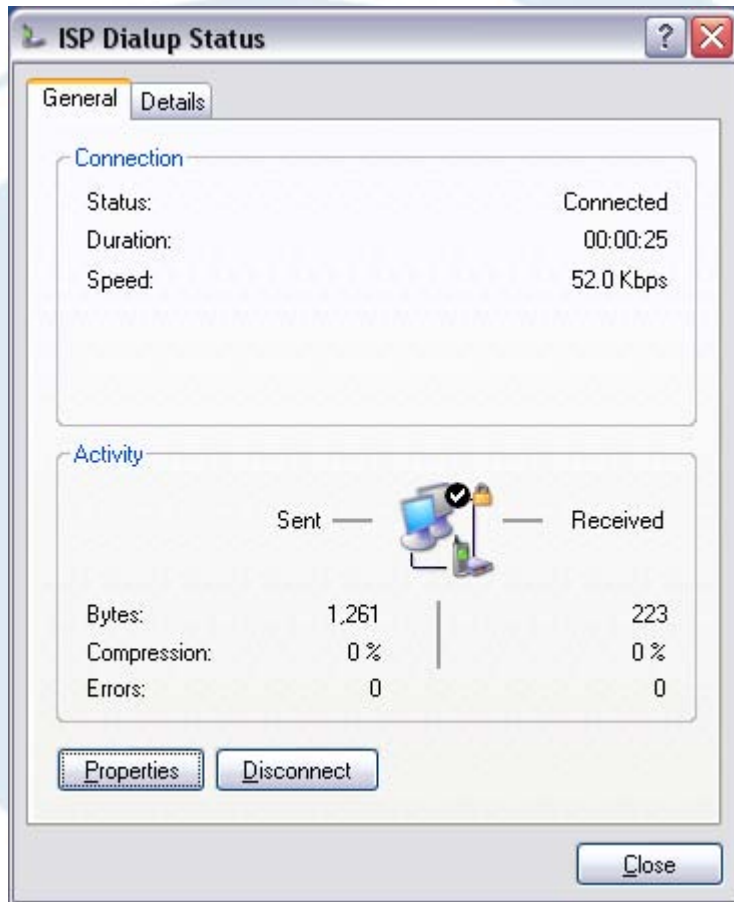
Click *“OK”*



You will notice that the Dial-up icon that you selected will display a hand indicating that the Dial-up connection is sharing the Internet.



Connect to the Internet by double-clicking “*ISP Dialup*”. After connecting, check if you have at least a 48 kbps connection.



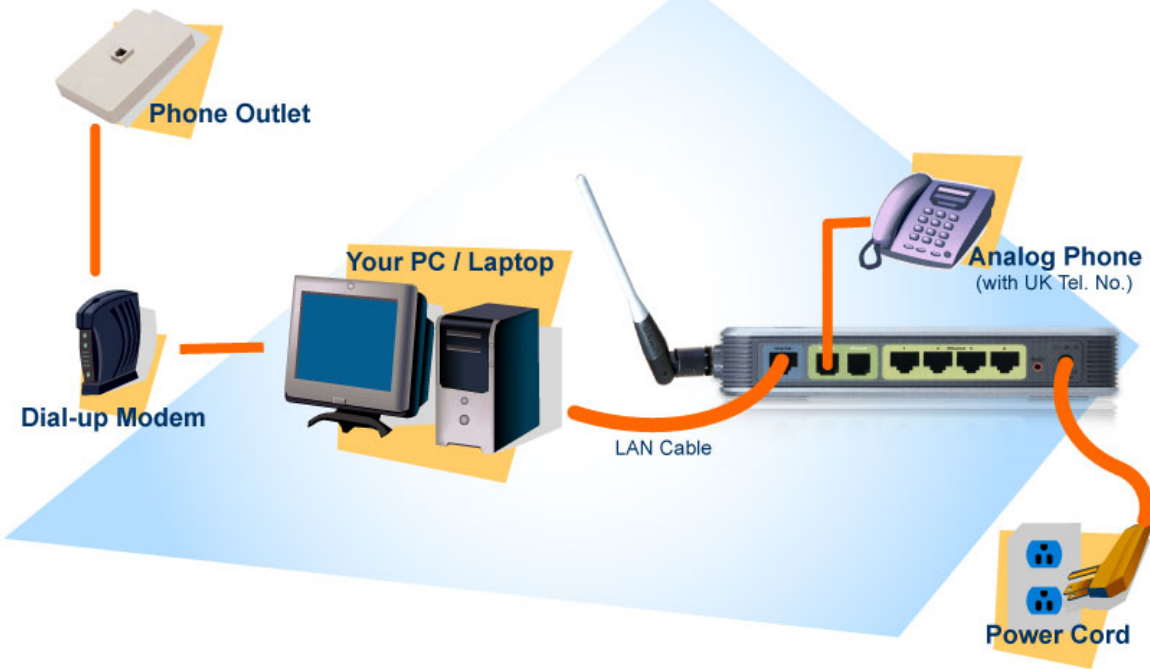
Try to browse any site. For example, visit <http://www.in-voice.com> to verify that you have an Internet connection.

Connect the LAN cable to Internet port of the MIGs (labeled Internet or blue socket at the back of the MIGs). The other side of the cable plugs into the LAN port of the computer that you used to dial-up.

After connecting the MIGs, plug it to a power source and turn it on. Wait for at least 20 seconds for Phone 1 light to go on.

You are now connected to the In-Voice network.

Connection Diagram overview



System Requirements:

PC with dial-up with at least 48 kbps connection and LAN card.

Notes:

You will need at least 20 kbps download / 20kbps upload speed on your dialup Internet access

To check your bandwidth, go to <http://commpartners.us/speedtest/> then click "Click to start my speed". It will display your download and upload speeds after a couple of seconds.

Note: Using a dial-up connection will not give you the same voice clarity as a broadband internet connection. .