

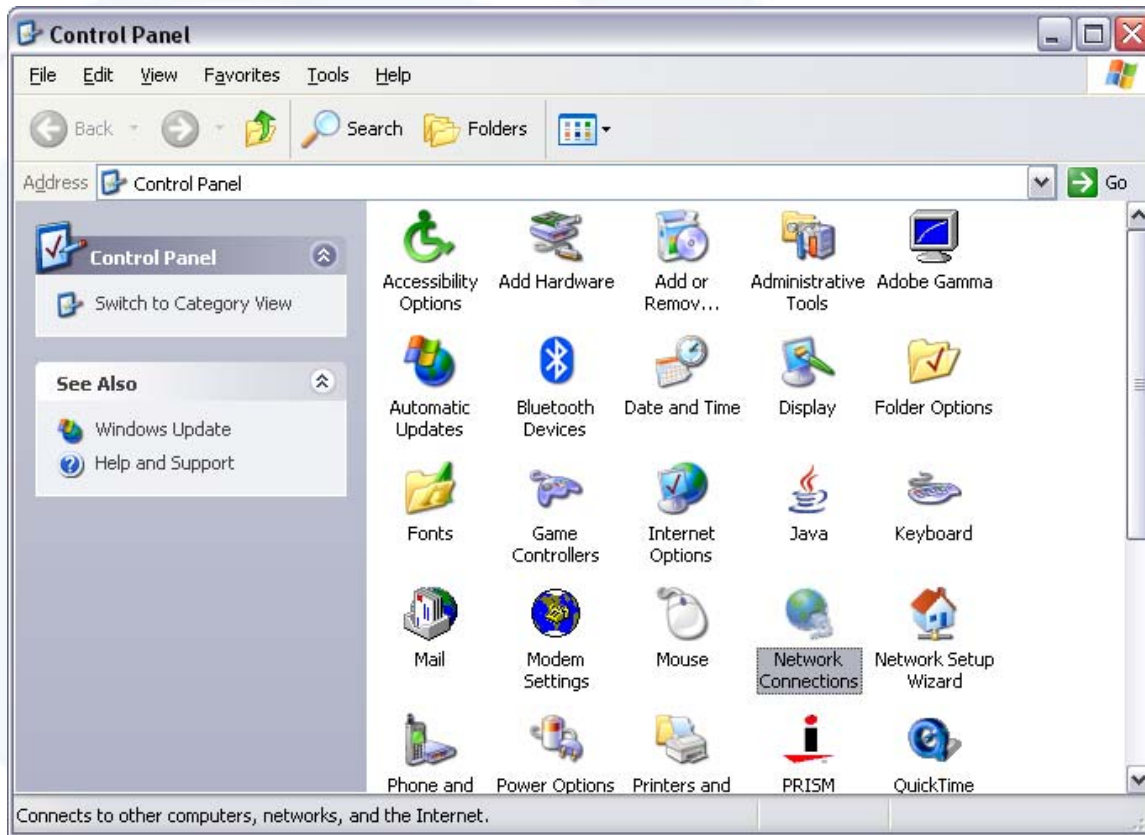


POWERED BY:



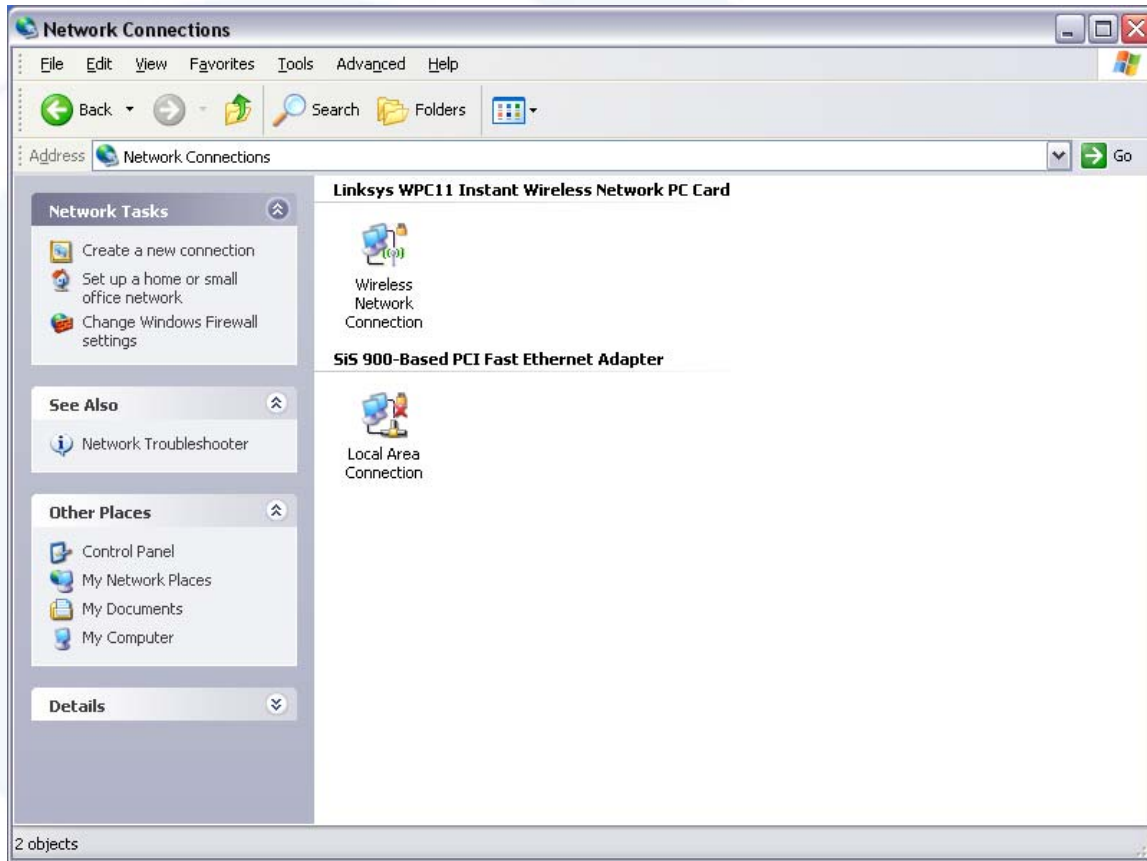
Using MIGs with a WiFi Internet Connection (Windows XP)

Using MIGs with a WiFi Internet Connection (Windows XP)



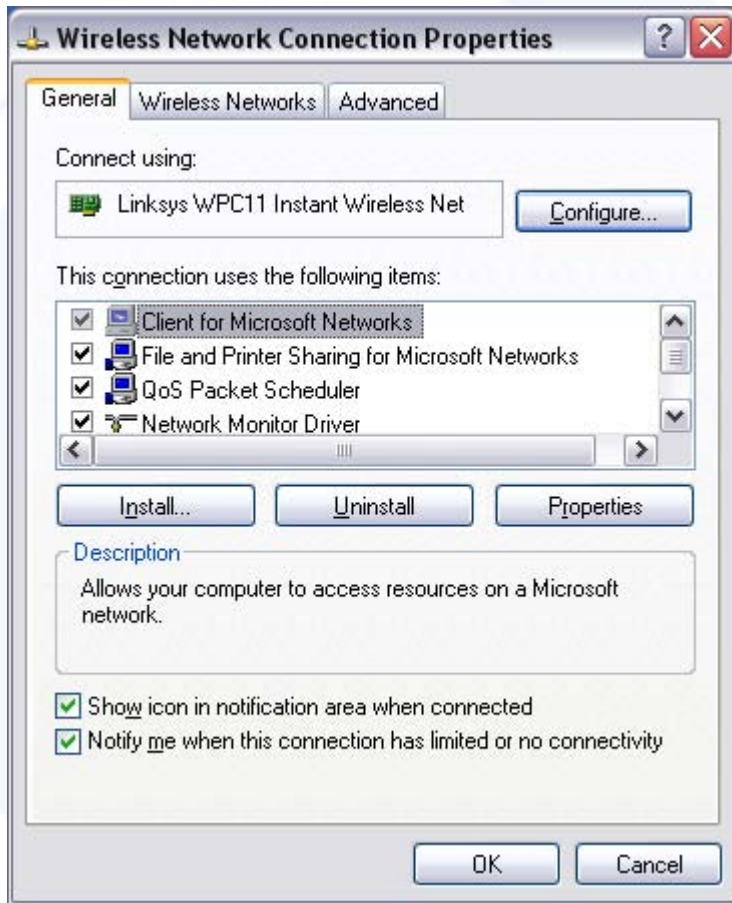
Click **“Start”** then select **“Control Panel”**

Click **“Network Connections”**

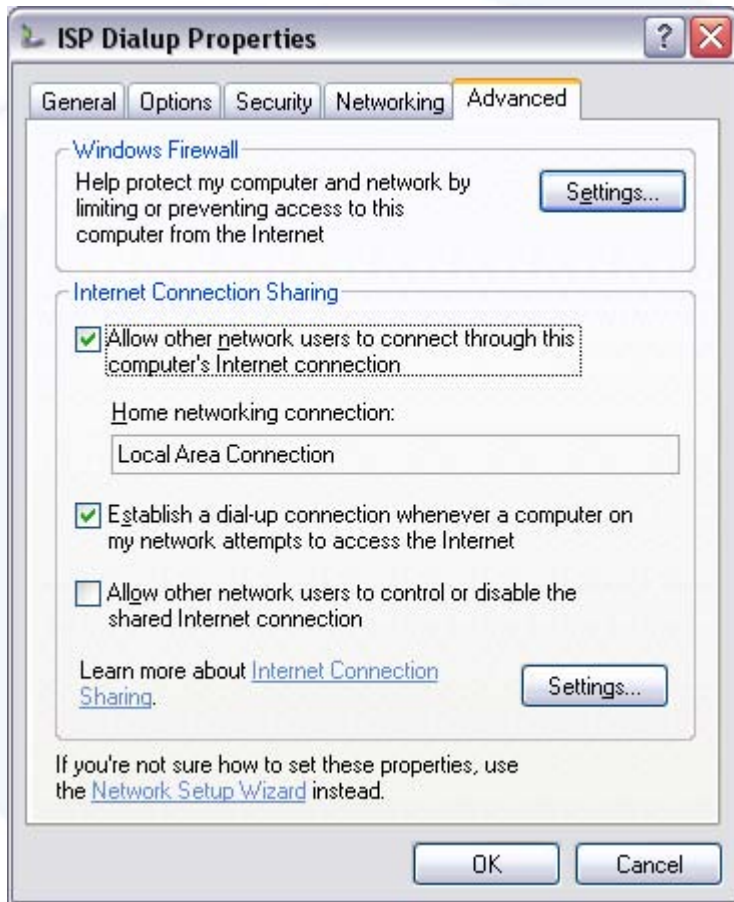


Inside Network Connections, right-click the **WiFi icon** (in this figure, Wireless Network Connection).

Click **“Properties”**

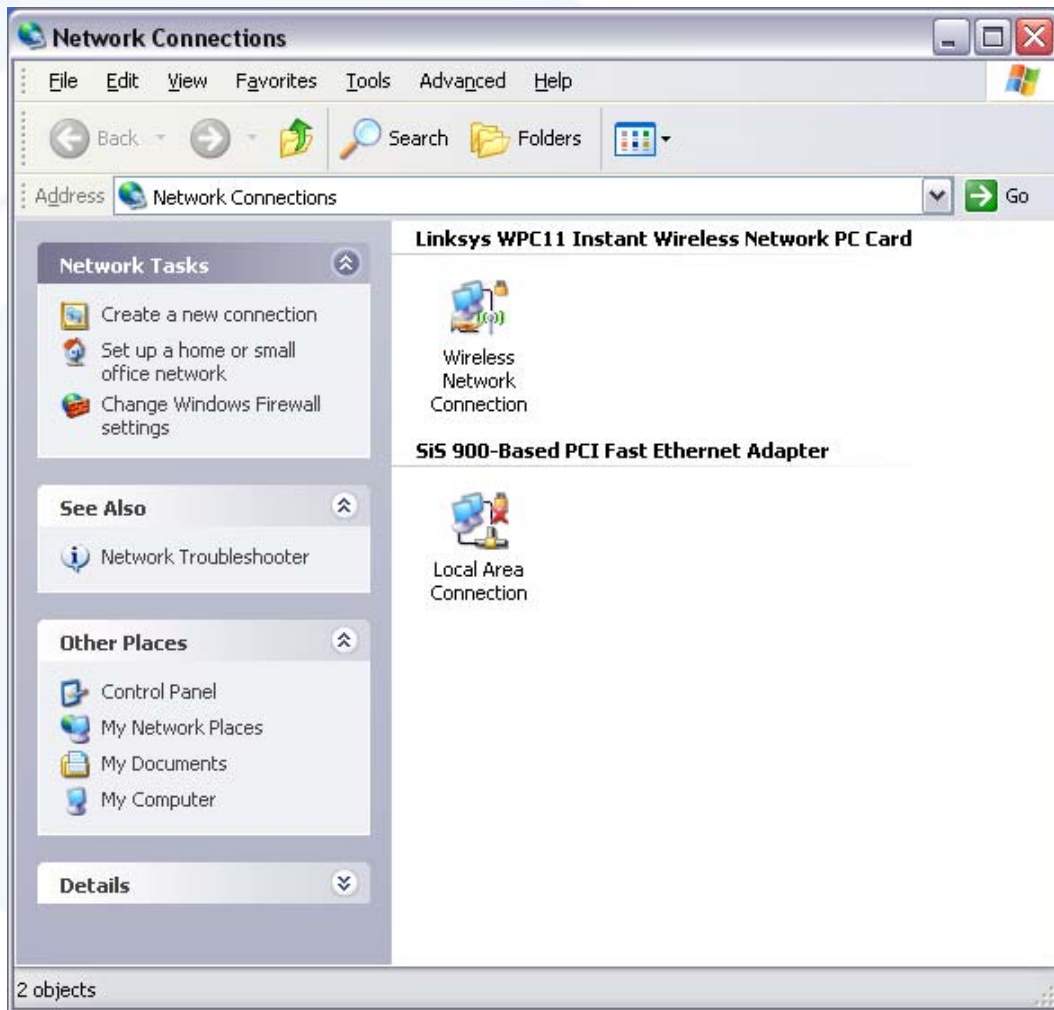


Select “Advanced Tab”



Click **“Allow other network users to connect through this computer’s Internet connection”**

Click **“OK”**



You will notice that the WiFi icon that you selected will display a hand indicating that the WiFi connection is now sharing the Internet with your Local Area Network.

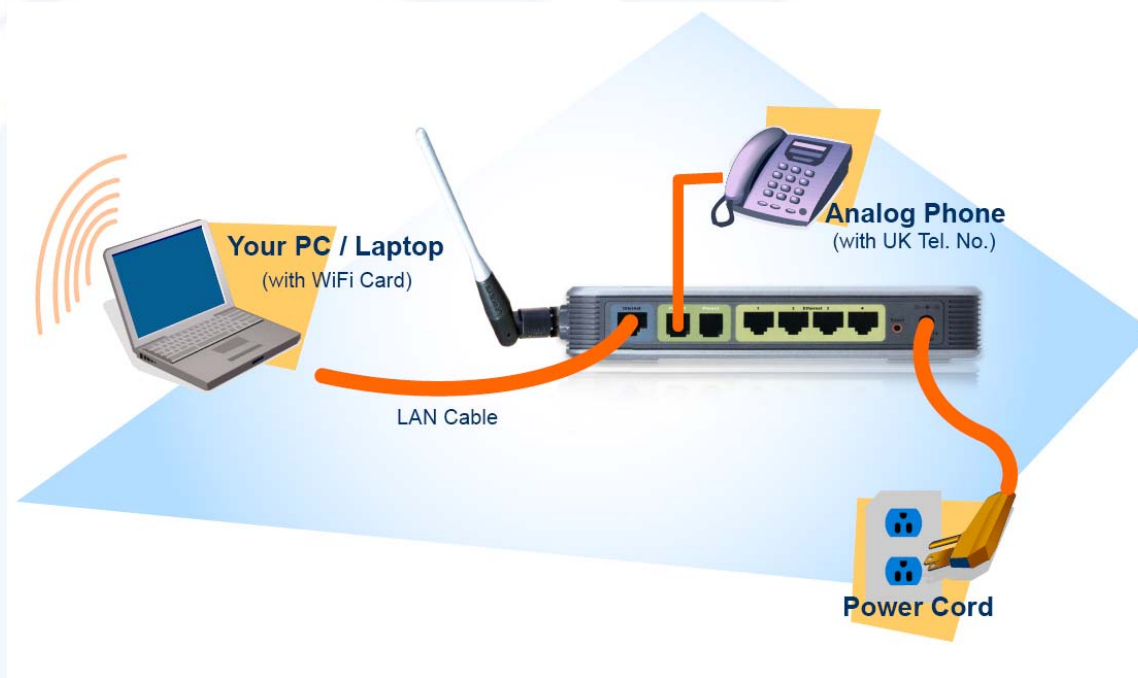
Try to browse any site. For example, visit <http://www.in-voice.com> to verify that you have an Internet connection.

Connect the LAN cable to Internet port of the MIGs (labeled Internet or blue socket at the back of the MIGs). The other side of the cable plugs into the LAN port of the computer connected to WiFi.

After connecting the MIGs, plug it to a power source and turn it on. Wait for at least 20 seconds for Phone 1 light to go on.

You are now connected to the In-Voice network.

Connection Diagram overview



System Requirements:

PC with WiFi internet connection and LAN card.

To check your bandwidth, go to (<http://commpartners.us/speedtest/>) then click "**Click to start my speed**". It will display your download and upload speeds after a couple of seconds.